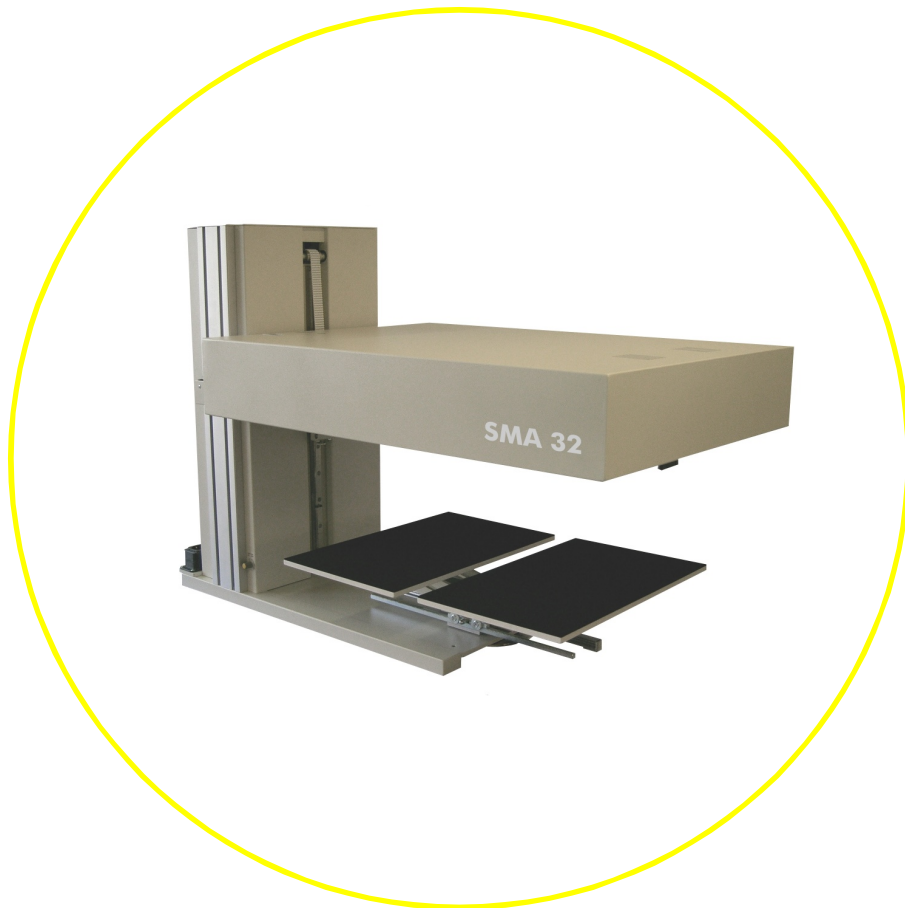


# PRODUCT INFORMATION

## SMA 32



## Color Scanning for Books & Documents A3

# TECHNICAL DATA SHEET

## SMA 32

### SMA 32 SCAN & COPY SYSTEM

The Scan & Copy System is based on SMA scanning technology. The device is extremely simple to use wherever digital replication of books and documents is required.

#### Digitizing Smaller Books and Documents is affordable

The SMA 32 is your cost effective solution if the requirement is to digitize books and documents of A3 size and smaller. It is the only product in this range which utilizes CCD line sensor technology and consequently delivers much better images as for example book scanners based on CCD camera technology. As an extra and unique benefit the SMA 32 comes with a rotatable book cradle. This allows you to even digitize A2 size books and documents by performing two separate scans. A very good solution if the majority of your originals are only A3 in size or smaller. No need to invest in a more expensive product.

#### High Quality Color Scanning Technology

The SMA 32 is equipped with a unique scan engine. It provides high quality images based on state of the art technology. Bitonal, grey scale or color images can be produced with an optical resolution of up to 600 dpi.

#### Networking Made Easy

The SMA 32 is a network scanner. Communication with the PC takes place via network card.

#### User Friendly for the Operator

The SMA 32 can be operated in total daylight. No matter if you position the scanner next to a window or in a shady corner. In addition, the operator does not get irritated by illumination elements which are usually necessary with other scanners for books or large formats.

Furthermore, the SMA 32 is equipped with a book cradle as a standard feature. The operator can choose within seconds whether he wants to use the flat table or a state of the art book cradle.

A foot switch for easy operation is included as a standard feature. If you prefer to release the scan by a mouse click please ask for the optional hand switch.

### TECHNICAL SPECIFICATIONS

#### Optical Resolution

Up to 600 dpi

#### Scan Speed

Less than 5 seconds ( 600 dpi)

#### Color Depth

Internally 36 Bit  
Externally 24 Bit (color), 8 bit (grey scale)

#### Lamp Operating Time

50000 hours !!!

#### Interface

Network Card - TCP/IP Protocol

#### Supported Operating Systems

Windows 2000 Professional  
Windows XP Home Edition / Professional

#### Included Software

Batch Scan Wizard

#### Book Cradle

Maximum Book Thickness: 90 mm (optional 170 mm)  
Maximum Book Weight: 40 kg  
Maximum Book Size (single scan): A3  
Maximum Book Size (for two separate scans): A2

#### Dimensions & Weight

W: 110 cm D: 60 cm H: 80 cm  
110 kg (without PC and Monitor)