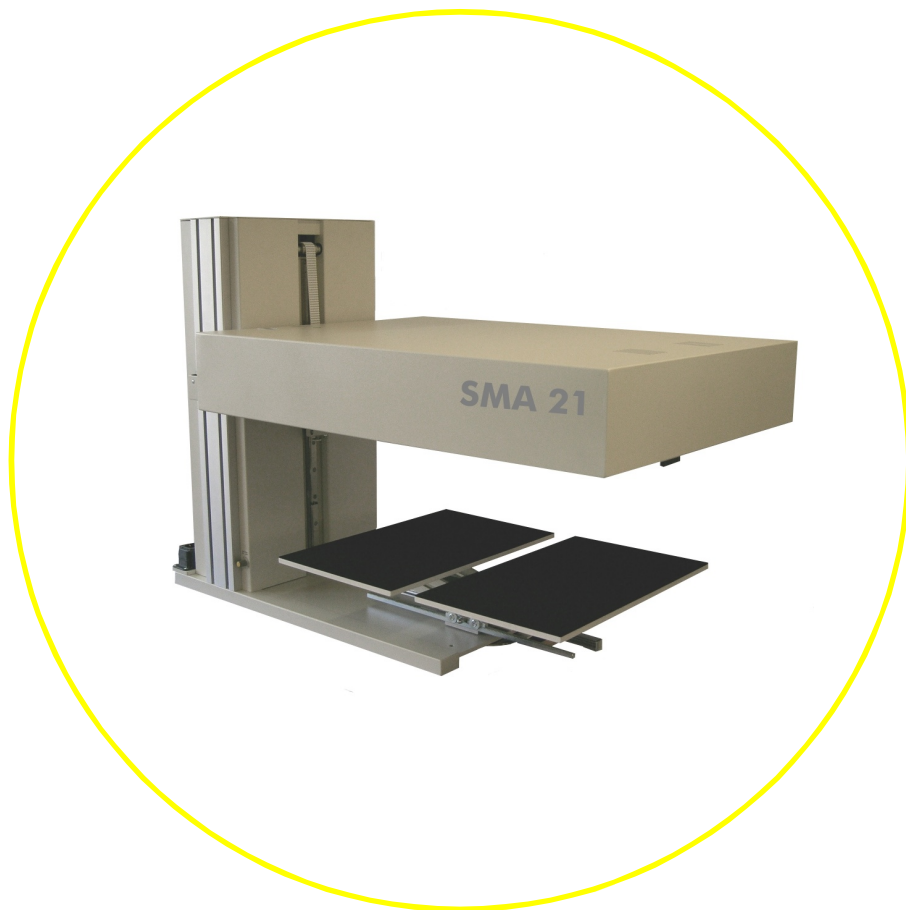


# PRODUCT INFORMATION

## SMA 21



## Color Scanning for Books & Documents A2

# TECHNICAL DATA SHEET

## SMA 21

### SMA 21 SCAN & COPY SYSTEM

The Scan & Copy System is based on SMA scanning technology. The device is extremely simple to use wherever digital replication of books and documents is required.

#### New Color Scanning Technology

A completely new concept of integrated intranet document work flow, as well as easy parameter setting via a common web browser. Up to now a separate software package had to be installed with a new scanner in order to configure and control the scanner. The use of an arbitrary web browser, for example Microsoft Internet Explorer, suffices to control the scanner including all desired device parameter settings. For more comprehensive applications an advanced software package, also for color management and book fold correction is available.

#### Networking Made Easy

Connection between PC and scanner is done via a 100Mbit Fast Ethernet network card and cable. Linking the scanner to an existing network is equally easy. By means of an arbitrary IP address the scanner gets its position in the network and is immediately ready to use.

#### High Speed Scanning at its Best

The scan speed of the SMA 21 is astounding and the achieved quality remarkable. It takes only 2 seconds to scan a DIN A2 size document at an optical resolution of 300 dpi and 24 bit color depth. After 5 seconds the image file with a size of 100MByte is compressed and available for preview in the browser window. It can now be printed on every network printed or dispatched via the internet.

#### User Friendly for the Operator

The SMA 21 can be operated in total daylight. No matter if you position the scanner next to a window or in a shady corner. In addition, the operator does not get irritated by illumination elements which are usually necessary with other scanners for books or large formats.

The SMA 21 is equipped with a book cradle as a standard feature. The operator can choose within seconds whether he wants to use the flat table or a state of the art book cradle. By rotating the book cradle even originals up to A1 can be captured. This feature is unique to SMA scanners.

The SMA 21 can easily be operated by foot or hand switch.

### TECHNICAL SPECIFICATIONS

#### Optical Resolution

A2 - 300 dpi, A3 - 400 dpi, A4 - 600 dpi

#### Scan Speed

A2 size at 300 dpi in 2 seconds (color or grey scale)

#### Communication

TCP/IP (Internet Protocol)

#### Connection

100Mbit Fast Ethernet network card

#### Software Options

##### *Batch Scan Wizard*

Automated scanning of large volume. Speeds up throughput and reduces operation tasks. Including cropping, deskewing and centering.

##### *Book Fold Correction*

Enables scanning of bound documents without annoying shadows. The bookfold is electronically flattened.

##### *Color Management*

Minimizes postprocessing effort. Features gamma correction for color management of the original document on the output device, selectable color palettes (such as RGB, NTSC, HDTV etc.), selectable gradation curve, white point setting etc.

#### Book Cradle

Controlled book pressure, adjustable up to 6 kg  
Maximum Book Thickness: 300 mm  
Maximum Book Weight: 40 kg  
Maximum Book Size: A1 (open book)

#### Dimensions & Weight

W: 120 cm D: 65 cm H: 80 cm  
130 kg (without PC and Monitor)